



In the
very south...



extrutec GmbH has operated its head-
quarters in the sunny region of
Radolfzell, in direct proximity of idyllic
Lake Constance, for more than 15 years.

More than 25 highly qualified and
motivated colleagues with vast
experience are working here to benefit
you, our dear customers.

extrutec has worked its way up step by step to become the techno-
logical leader in any of its specialisations. Continuous new and further
developments will continue to further strengthen this position in future.

See for yourself! You are welcome to have a look at the performance
and innovative power of our company in person any time. Our legendary
hospitality will make your visit a special experience from more than just
a technical point of view. I can promise you that in best conscience.

See you soon.
Cordially yours,

Uwe Günter | Managing Partner



”

Consistent customer-focused

Seeing the world through our customers' eyes and aligning our actions with the results is the basis for our daily effort. Defining our products' characteristics consistently based on market and customer needs and transferring them to innovative solutions are some of our company's strengths.

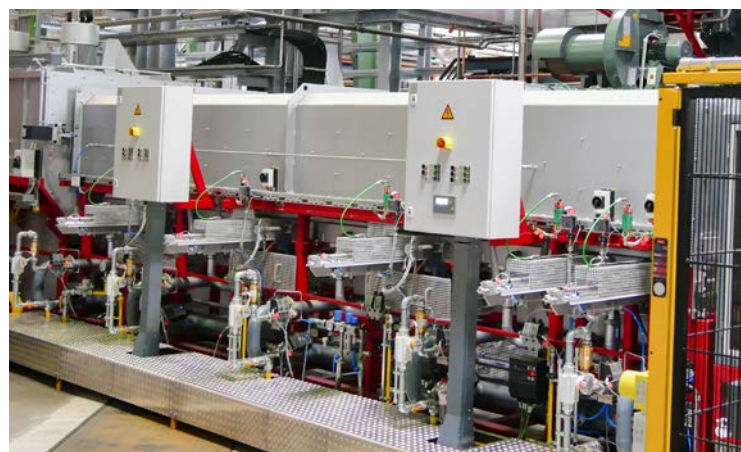
We make important strategic decisions today to ensure that this will not change in the future. Our processes are put to the test every single day.

HEATING

”

The
hot phase**Quick gas-heaters**

extrutec quick gas-heaters are the benchmark in the area of continuous heaters. Extremely high availability, very low maintenance needs, and high economic efficiency are only some of their many outstanding features.



Decades of experience and continuous further development culminate in heaters with a globally unparalleled level and highest throughput per metre of heater length.



The extrutec transport system with its low-maintenance and low-wearing rollers is unique on the market.

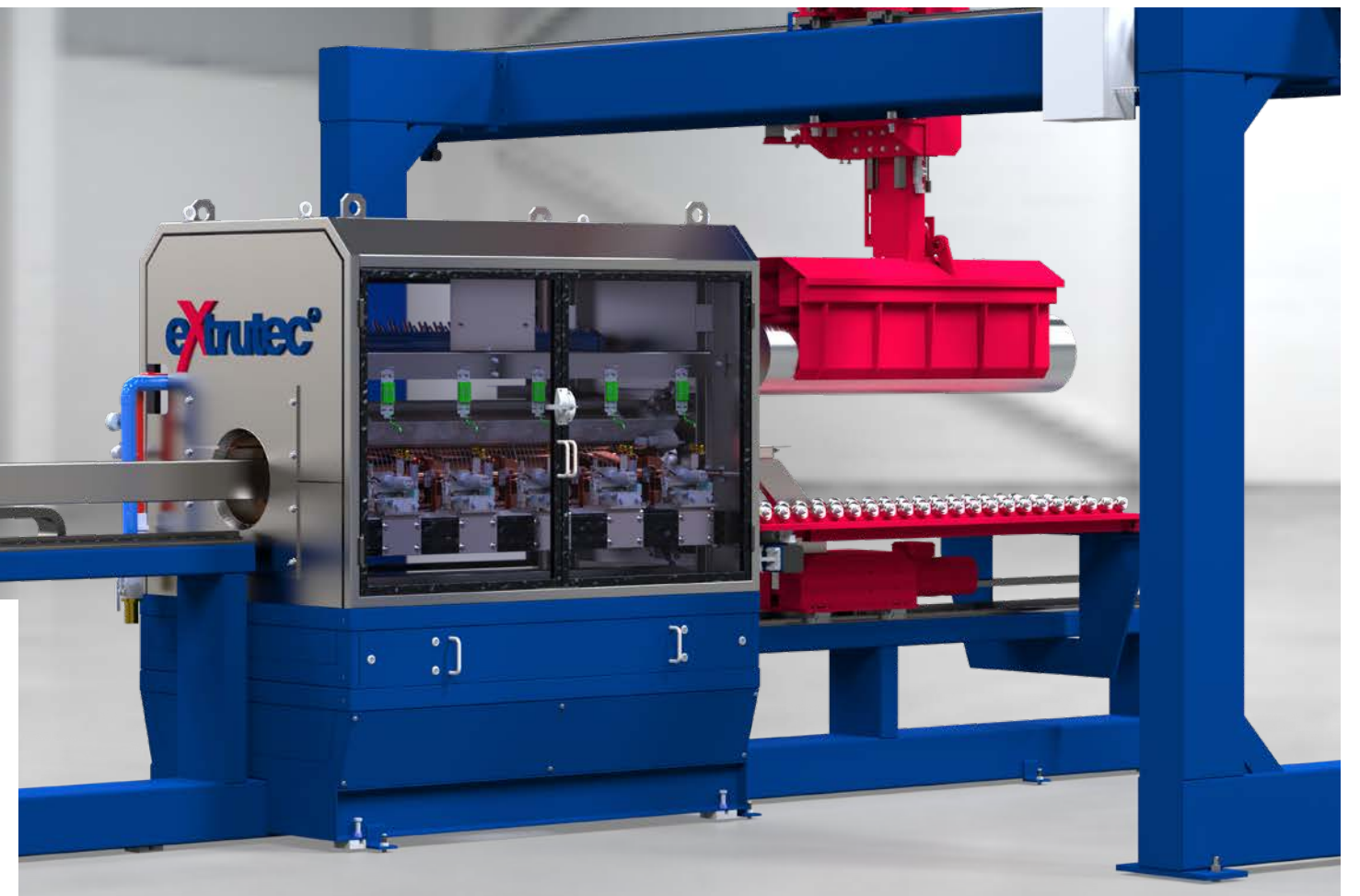
Innumerable detail solutions allow unprecedented maintenance-compatibility and highest plant availability.



HEATING

Induction heaters

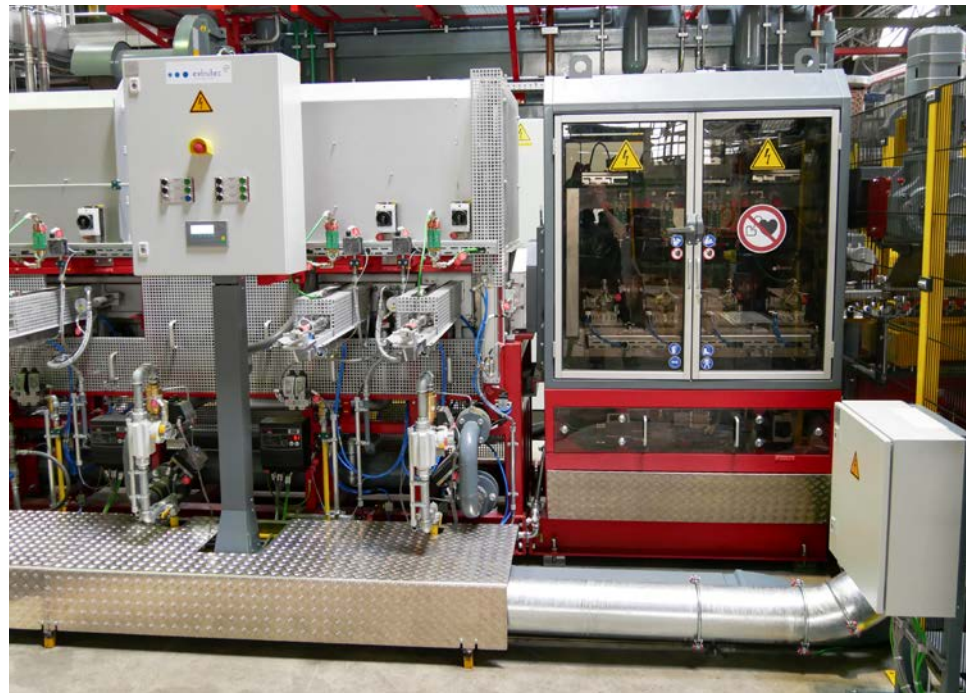
Since 2019, induction heaters have been part of our product range as well, making extrutec the only supplier on the market to offer all possible heating methods from a single source. The removal of interfaces and accumulation of know-how in one company will be important criteria for our customers in future. extrutec induction heaters are characterised by cutting-edge converter technology, high efficiency, precise temperature control, and great maintenance friendliness.



Hybrid systems

extrutec has been selling the globally patented inline heater, a combination of gas and induction heater, for many years. They are both placed in series in one line.

This combination offers outstanding benefits as compared to a standalone solution. Advantages include in particular the lower space demand, greatly improved efficiency and considerably lower investment costs.



These features have facilitated the purchasing decisions of many of our premium customers in recent years. The cost-efficient basic gas heating and subsequent application of a precise taper by induction are the best heating concept currently available. The features are particularly important where the end product has to meet high demands, as is the case, e.g. in automotive construction.

The stand-alone concept supplements this option, with the induction heater placed separately between the gas heater and the press. This concept permits not only the planned production but also insertion of sawed logs, e.g. of a different alloy, past the gas heater.



Log pre-heating

From the very beginning, we have committed to resource-protecting handling of fossil fuels and thereby to permanent efforts to keeping CO₂ emissions as low as possible.

This leading idea continually drives us to find new ideas and solutions. Our latest development is the Eco Shower Unit (ESU). A patent application is pending now. It uses the residual heat from the gas heater exhaust to produce water heated up to 90 °C in an air-water heat exchanger. In a unit upstream of



the gas heater, the aluminium logs are pre-heated to temperatures of up to 90 °C by laminar water flow of the entire surface with hot water. It is another pioneering result for the benefit of our customers and for sustainable protection of our environment.

”

Going
hand in hand

Log magazines

The product range starts with simple unrolling magazines, continues through noiseless chain magazines, and goes to the vertical magazines, which have been used the most frequently for many years. The latter offer highest material density, flexibility, and the option of alloy- or batch-specific supply on narrow space.

Log cleaning systems

extrutec high-pressure cleaning devices effectively clean the logs of any contamination with hot water and a pressure of 210 bar. The advantage is reflected in the service lives of the extrusion dies and the quality of the profile surfaces. In contrast to cleaning with brushes, high-pressure cleaning does not change the surface from its casting roughness. This leads to a much higher degree of efficiency of the gas heater.



Hot and cold sawing

extrutec log saws, no matter if in the form of hot or cold saws, are another top product that offers many unique selling points. A cutting width of 3.5 mm at a log diameter of 9", or of 6 mm at a log diameter of 14", are unparalleled so far.

Our saws are particularly maintenance-friendly because they do not have any hydraulics systems. This is an advantage that many maintenance managers and their employees value greatly.

HEAT TREATMENT

“

From
hot to cold



Ageing ovens

Different oven concepts are used based on space demand and transport logistics. In addition to simple floor-arrangement ovens with longitudinal transport on roller tracks, overhead ovens supplied either with scissor lift or vertically suspended hydraulic cylinders are part of our portfolio as well.



Our latest development: A floor-arrangement oven loaded with a shuttle from the side. This extremely space-saving oven can be installed in halls where all other concepts would fail for reasons of lack of overhead clearance or where unnecessary investments in high buildings are to be avoided.

Die heaters

Simple top-loading heaters and fully automatic overhead heaters are both part of our product range. The latter can be used with a nitrogen atmosphere if desired. We are the only supplier to deliver heaters with a gas-tight inner housing in this area. Although more expensive in production, this principle clearly reduces nitrogen consumption.

Professional cooling

The “World’s most advanced profile cooling”

Material resilience, ductility, and dimensional stability are no foreign concepts for us.



Our highly developed profile cooling equipment offers the matching solutions for these tasks. Water-quenching nozzle stocks, placed in parallel with the profile course and swiveling on motors, are part of this as well as multiple-zone division with proportional pressure control, visualisation of the profile geometry (real data) and use of (“inoculated”) air, enriched with water vapour. Continuous material optimisation in the profiles continually increases demands to system technology.

This is a challenge we gladly face every single day and with great conviction.

Service

We will service your facility, repair any damage on it up to total failure, modernise or retrofit it and support you on quickly to resolve system standstills. We offer professional consulting for any work to be performed.

We place high value on quality and technical competence for any services. Our experienced, highly qualified employees and partners have been familiar with all work around gas and induction ovens and facilities for many years.

”

What about
the future?

AI

Preserving what is
good and developing
it further

Driving
innovations

Protecting
resources

With motivated and
highly qualified employees
on the order of our
customers and in the
interest of our shared
environment.



[extrutec®]

H E A T I N G
M A T E R I A L H A N D L I N G
H E A T T R E A T M E N T

www.extrutec-gmbh.de

extrutec [⊕]



extrutec GmbH
Feldstraße 25
78345 Moos | Germany

Phone +49 (0) 7732 939-1390

Fax +49 (0) 7732 939-1399

E-Mail info@extrutec-gmbh.de